

# NIVEK INDUSTRIES

## PRODUCT CATALOGUE



TARE-5000GS

# 2022



The initial concept of TED was born when Kevin Cant, the founder of Nivek Industries narrowly escaped serious injury in 2008 when the belly plate he was removing from a bulldozer slipped and fell. Kevin spent 3 years in the research, concept and design stage releasing the first TED prototype in 2011.

The design has undergone several upgrades and enhancements since its initial release and now boasts a whole range of attachments enabling it to make a myriad of maintenance jobs safer and physically less stressful for maintenance personnel. Designed by a fitter, for fitters TED is becoming widely respected as a necessary workshop and pit tool by both fitters and management at a rapidly growing rate here in Australia and overseas. The Lift Assist-40, launched in 2019, is the second product line to be designed, made and exported by Nivek Industries with many more to follow in the near future.

## Copyright notices

Nivek is a registered trademark owned by Nivek Industries in Australia on 9th November 2011.  
Trademark Number: 1458362

TED is a registered trademark owned by Nivek Industries in Australia on 10th July 2014.  
Trademark Number: 1633766

## Tracked Elevating Device

Designed by a fitter for fitters, TED is the only remote controlled, all terrain, hydraulic belly plate jack on the market. Effortless, remote controlled operation keeps fitters out of the danger zone during critical lift and lowering stages of suspended load component removal and install. In addition to protecting against fatal suspended load injuries, TED helps reduce workplace injuries such as chronic back problems and strain injuries.

**Page 4**

## Big TED

Big TED is a remote controlled, all terrain, scissor jack designed to support and lift loads of up to 3,000kgs. Big TED incorporates several user friendly features including a powered turntable, 80mm side shift, loaded weight display, AUX power for attachments and enhanced fault finding functionality. Effortless, remote controlled operation keeps fitters out of the danger zone, whilst still providing accurate movement, during critical lift and lowering stages during suspended load component removal and install.

**Page 36**

## Lift Assist 40

With six points of articulation and smart spring technology, the LA40 achieves a full range of horizontal and vertical movement. Apart from the obvious benefits to hand safety by reducing finger exposure to pinch points, the LA40 offers positive improvements to operator overall wellbeing through reduced manual handling. Impressive efficiency gains have been seen as an added bonus, stemming from the improvements offered by the LA40.

**Page 42**

## REX

REX is a tough, compact, remote-controlled mini digger. Incorporating a quick release hitch plate, operators can quickly and easily change from a bucket loader, to a trencher, to a hole digger to name but a few. REX's compact body houses an 18.8hp engine, providing operators with sufficient power to tackle the toughest jobs. With a narrow body and low profile, REX can manoeuvre through a standard doorway and operate in confined spaces. Ideal for working under conveyor belts, in culverts or backyards with limited access.

**Page 54**





**TED**



**Big TED**



**LA40**



**REX**



# Tracked Elevating Device





# CONTENTS

<b>TED Overview .....</b>	<b>6</b>
<b>TED Specifications .....</b>	<b>8</b>
<b>TED Dimensions.....</b>	<b>9</b>
<b>Optional Extras / Upgrades.....</b>	<b>10</b>
Extras / Upgrades.....	10
<b>TED Attachments.....</b>	<b>12</b>
Haul Truck Maintenance .....	12
Bulldozer Maintenance .....	16
Cutting Edge Maintenance .....	18
Adaptor Modules .....	20
General Purpose Tools.....	24
Storage and Transport .....	30





## Tracked Elevating Device

Part No: TED-ASY-000-00

The Tracked Elevating Device, affectionately known as TED, was built primarily as a bulldozer belly plate jack. TED was designed to be low profile, self-propelled, remote controlled and all terrain.

The ability to lift heavy components, up to 800kg (1,760lbs), from underneath removes the suspended load hazard of many maintenance operations. The component can be pre-loaded onto TED, driven into position under the machine and then safely lifted into place and mounted, all via a remote control.

The remote-controlled operation allows maintenance personnel to distance themselves from load hazards during maintenance operations, particularly in the critical lowering phase of belly plate removal.

Having a TED on your worksite doesn't just safeguard your workers from potentially fatal suspended load crush injuries, it can also have a positive impact on fatigue prevention, reduce muscle strain injuries, and drastically improve efficiency across numerous repair and maintenance applications.







### RADIO CONTROLLED

TED is wirelessly controlled by a paired radio system operating within the 433-434MHz range on 1 of 32 different channels.



### LOW PROFILE

With a compressed height of 315mm (12.5inch), TED will fit under most heavy bulldozers and then be driven out with the removed component on top.



### ALL TERRAIN

TED's tracks allow travel over virtually any surface allowing deployment in the field saving a fortune on machinery transport and down time.



### LIFTING CAPACITY

TED has been built with an impressive 800kg (1,760lbs) safe working load lifting capacity.



### SELF PROPELLED

A 12V battery system powers TED's hydraulic drive motors and scissor cylinders via a 2kW DC motor/pump.



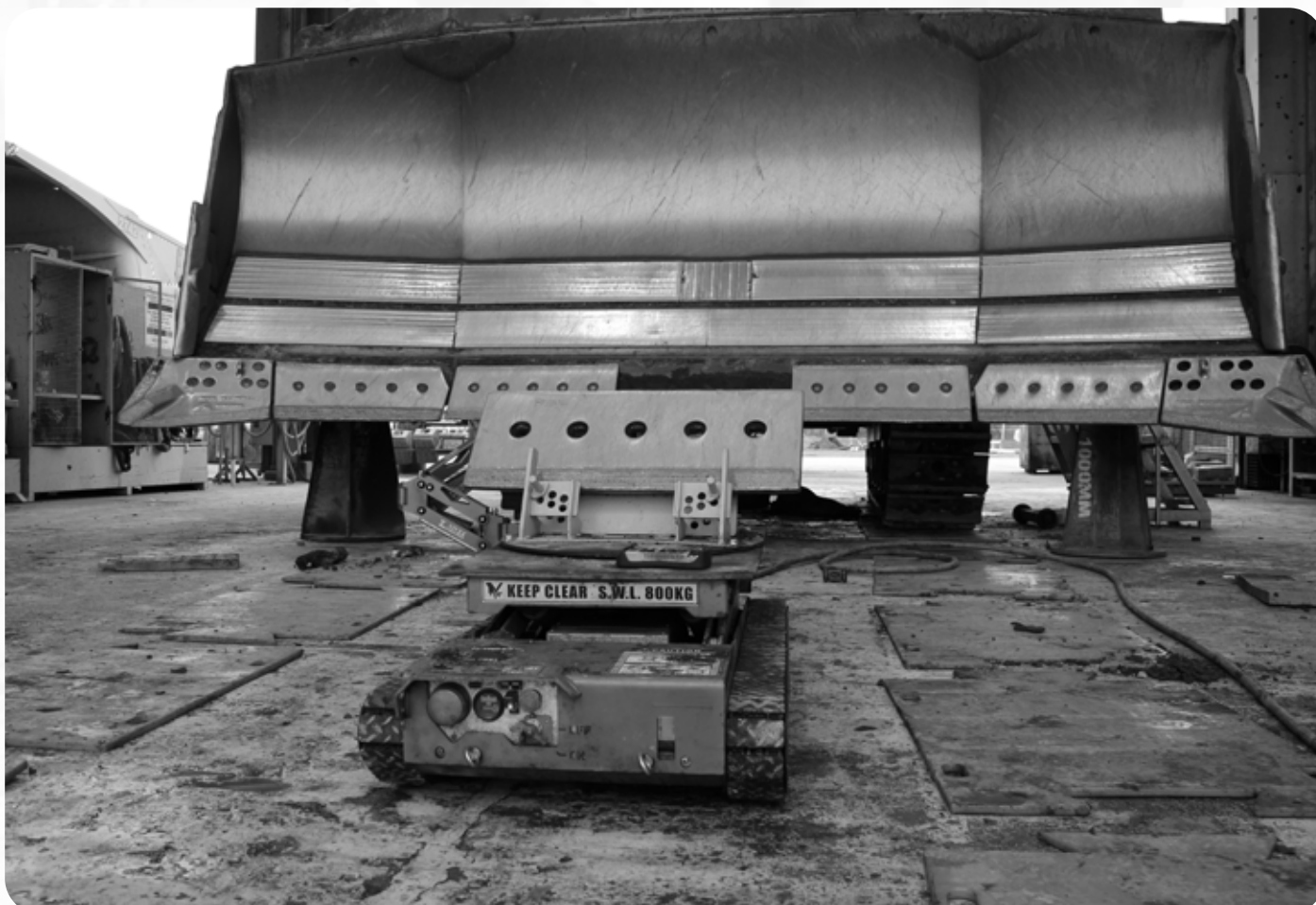
### ADAPTABLE

TED has an extensive range of versatile attachments allowing operators to perform a variety of tasks safely and efficiently.



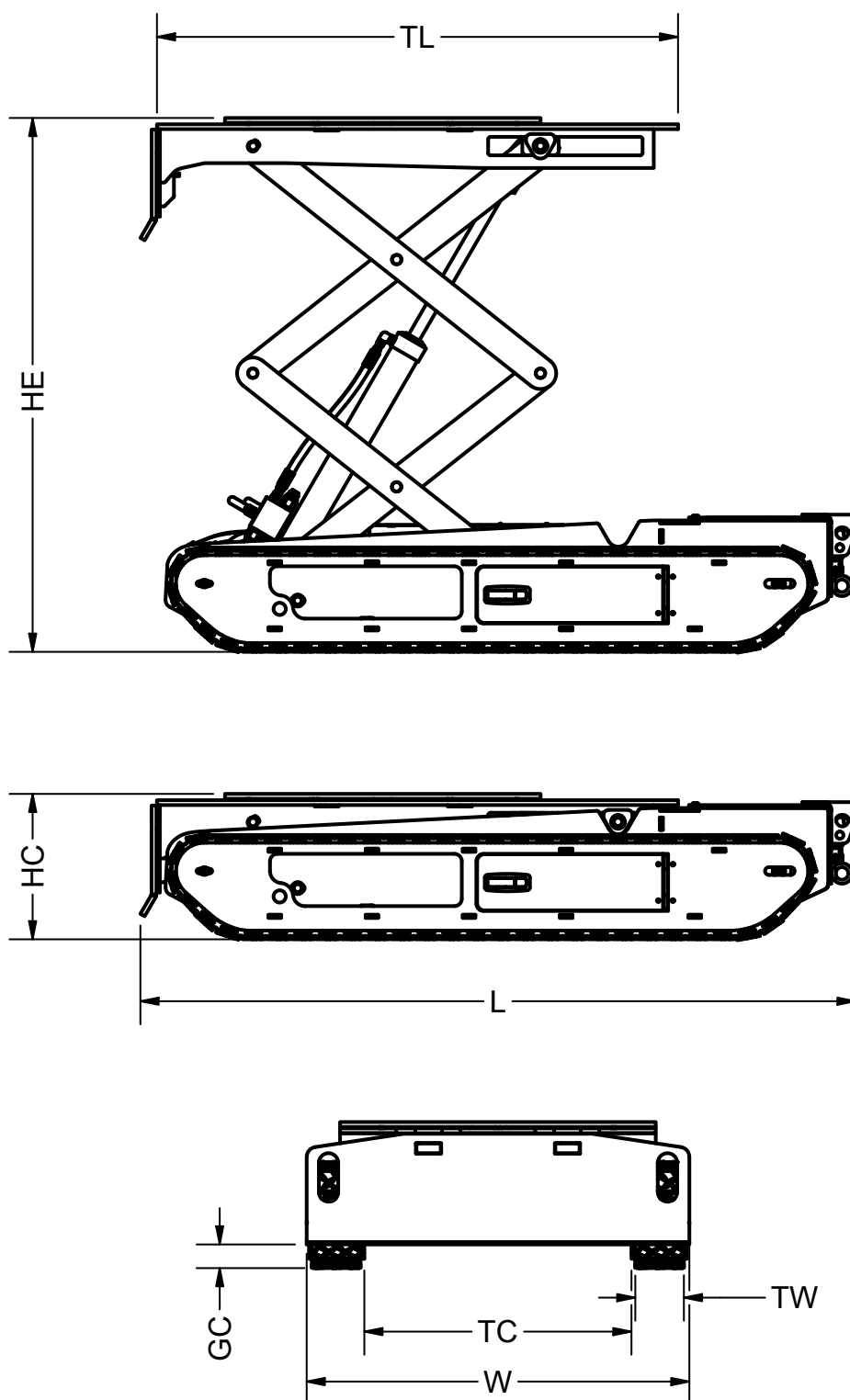
## SPECIFICATIONS

Tare Weight (kg/lbs)	580 / 1,280
Safe Working Load (kg/lbs)	800 / 1,760
Ground Speed	Slow 0.7km/hr / 0.4MPH Fast 1.1km/hr / 1MPH
Drive Motors	Two HR-125 Hydraulic Motors 13.1 HP (continuous) SAE A Flange Mount, 1" Straight Woodruff key
Power Unit	Hydro-Tek Hydraulic Power Unit 12VDC, 2kW Motor 1.6cc Pump with 4L Tank
Battery System	12VDC 224AH Battery system Two 6VDC 224AH Deep-Cycle AGM batteries in series
Radio System	Magnatek MHR Radio Controller & Flexpro8 Transmitter (Paired system) 433-434Mhz operating frequency



## DIMENSIONS (MM/INCH)

Length (L)	1,374 / 54.1	Table Length (TL)	1,073 / 42.25
Width (W)	778 / 30.6	Ground Clearance (GC)	65 / 2.55
Height Compressed (HC)	315 / 12.4	Track Clearance (TC)	550 / 21.65
Height Extended (HE)	1,172 / 46.15	Track Width (TW)	100 / 3.95





# Extras / Upgrades

TED

## Tracks

Part No: TED-DRV-001-00  
Standard



**Checker**

The standard tracks for TED. As the name suggests, the cleat is made from checker plate.

Part No: TED-DRV-001-00(N)  
Upgrade



**Neoprene**

For those floors that require a less harsh track, the cleats have been coated with neoprene to provide some cushioning.

Part No: TED-DRV-001-00(G)  
Upgrade



**Grouser**

If extra grip is required, the grouser track is perfect for providing additional pull in soft terrain or grip on icy surfaces.

## Charging

Part No: BCS-A1220  
Standard



**20A Charger**

Compact and lightweight with an output current of 20A. Charge time for TED is 10hrs from dead flat.

Part No: BCS-1245C  
Upgrade



**45A Charger**

Larger charger with an output current of 45A. Charge time for TED in 5hrs from dead flat.

## Charging Accessories

Part No: BCS-AL1220  
Upgrade



**20A Lithium Charger**

For use with the Lithium Battery, this charger is compact and lightweight with an output current of 20A. Charge time for TED is 10hrs.

Part No: BC-1250-MBL  
Accessory



**Portable Rescue Charger**

The Portable Rescue Charger is a 12V 50A battery/charger that has enough charge capacity to move TED from underneath a vehicle if flat.

## Batteries

Part No: DC224-6  
Standard



### 12VDC Deep-Cycle AGM Battery System

TED comes standard with two 6VDC 224AH Deep-Cycle AGM batteries wired up in series to produce a 12VDC 224AH battery system. This 224AH system will produce 1-2hrs of run time.

Part No: 512-LBAT-12-100  
Upgrade



### 12VDC Lithium Battery System

For additional run time and battery life, the 12VDC 100AH Lithium batteries are a better option. Wired in parallel to provide 200AH, this system will produce 2-3hrs of run time.

## Transmitter Parts

Part No: TED-ASY-000-00  
Standard



### Flexpro-8 Black Protector Cover

The Black Protector Cover comes standard with the Flexpro-8 Transmitter and will help protect the transmitter from small falls and general wear and tear.

Part No: TED-ASY-000-00  
Upgrade

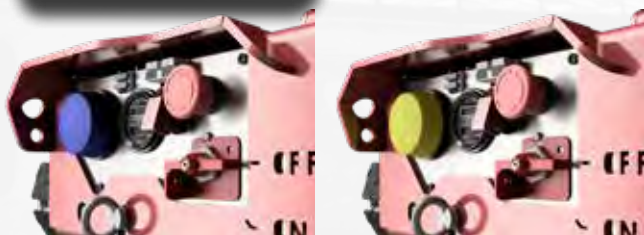


### Extended Deadman Switch

The Extended Deadman Switch allows operators wearing gloves greater control of the switch when driving the machine.

## Other

Part No: TED-ELE-007-XX  
Option



### Strobes

The strobe flashes when TED is powered on. A Blue <sup>(007-01)</sup> or Amber <sup>(007-02)</sup> strobe can be fitted.

Part No: N/A  
Option



### Sticker Kits

Nivek offer customers the Sticker Kits in several languages including English Metric, English Imperial, Spanish and Chinese.



# Haul Truck Maintenance

## Steer Cylinder Cradle

Part No: TED-ATT-005-01



The Steer Cylinder Cradle is designed to support steer cylinders and other cylindrical components during removal and installation.

The Steer Cylinder Cradle can be mounted onto any of the adaptor modules for greater alignment of components.

### SPECIFICATIONS

Safe Working Load	800kg / 1,760lbs
Attachment Type	Turntable
Tare Weight	15kg / 34lbs
Dimensions (LxWxH)	570 x 340 x 200mm 22.4 x 13.4 x 7.9inch

### APPLICATIONS

- Tie Rods
- Steer Cylinders



## Sump Tray

Part No: TED-ATT-014-00

The Sump Tray is used primarily with either the Low Profile Pivot Table or Slope Jig to alter the table angle and can be used as either a flat tray or with a 45mm (1.8inch) edge around the frame.



### APPLICATIONS

- Sumps
- Bulky Items

### SPECIFICATIONS

Safe Working Load	200kg / 440lbs
Attachment Type	Turntable
Tare Weight	36kg / 80lbs
Dimensions (LxWxH)	122 x 62 x 50mm 4.8 x 2.4 x 2inch

## Sound Suppression Tray

Part No: TED-ATT-028-00

The Sound Suppression Tray has been specifically designed to assist in the removal and installation of sound suppression panels.



### APPLICATIONS

- Sound Suppression Plates
- Bulky Items

### SPECIFICATIONS

Safe Working Load	200kg / 440lbs
Attachment Type	Turntable
Tare Weight	51kg / 113lbs
Dimensions (LxWxH)	1,100 x 1,100 x 500mm 43.3 x 43.3 x 19.7inch



## Spindle Cap Tool

Part No: TED-ATT-025-00



Strut Spindle Caps of various sizes can be safely removed and replaced using the SSCT. The three (3) threaded bolts offer width and angle adjustment to accommodate varying strut spindle caps.

The SSCT is designed to take the weight of the strut spindle cap and removal tool only. The strut itself must be supported as per manufacturers specifications.

### SPECIFICATIONS

Safe Working Load	800kg / 1,760lbs
Attachment Type	Turntable
Tare Weight	27kg / 60lbs
Dimensions (LxWxH)	550 x 550 x 600mm 21.7 x 21.7 x 23.6inch

### APPLICATIONS

- Strut Spindle Caps
- Shim Adjustment

## Brake/Steer Pump

Part No: TED-ATT-044-00



The Brake/Steer Pump Tool can be manually pivoted +/- 5 degrees to allow for spline alignment and incorporates an interchangeable pump mounting weldment allowing operators to use the tool for various pumps.

### SPECIFICATIONS

Safe Working Load	200kg / 440lbs
Attachment Type	Turntable
Tare Weight	52kg / 115lbs
Dimensions (LxWxH)	585 x 500 x 491mm 23.1 x 19.7 x 19.4inch

### APPLICATIONS

- Komatsu 830E and 930E

## Transmission Pump Tool

Part No: TED-ATT-036-00

The Transmission Pump Tool can be rotated manually and incorporates an interchangeable mounting weldment allowing operators to use the tool for various pumps.



### APPLICATIONS

- 793 Transmission Pumps

### SPECIFICATIONS

Safe Working Load	200kg / 440lbs
Attachment Type	Turntable
Tare Weight	26kg / 58lbs
Dimensions (LxWxH)	770 x 340 x 276mm 30.4 x 13.4 x 10.9inch

## Steering Arm

Part No: TED-ATT-043-00

The Steering Arm Tool has been specifically designed to assist in the removal and installation of the Komatsu 930E Steering Arm.

Due to the weight of the attachment, it has been designed to be forkliftable even when carrying a steering arm.



### APPLICATIONS

- Komatsu 930E Steering Arm

### SPECIFICATIONS

Safe Working Load	800kg / 1,760lbs
Attachment Type	Turntable
Tare Weight	120kg / 190lbs
Dimensions (LxWxH)	1085 x 650 x 551mm 42.8 x 25.6 x 21.7inch



# Bulldozer Maintenance

## Belly Plate Stand (Legs)

Part No: TED-ACC-001



This set of four sturdy stands will support the load of a belly plate up to 800kgs (1,760lbs), freeing TED up to continue with other jobs. Once the legs are securely attached to the removed belly plate, lower TED down and leave the belly plate to be supported by the Belly Plate Stand.

### SPECIFICATIONS

Safe Working Load	800kg / 1,760lbs
Attachment Type	Accessory
Tare Weight	24kg / 53lbs
Dimensions (LxWxH) (Each Leg)	810 x 130 x 90mm 31.9 x 5.2 x 3.5inch

### APPLICATIONS

Used to support removed belly plates.



## Track Roller Carrier

Part No: TED-ATT-010-00

The Track Roller Carrier's intended purpose is to aid in the removal and replacement of track rollers, lowering the manual handling component and removing the need for placing hands in harm's way.

When used by itself the Track Roller Carrier has a SWL of 200kg (440lbs), however if used with the TED Counter Balance (Page 23) the SWL can be increased to 400kg (880lbs).



### APPLICATIONS

- CAT D-9, D-10 & D-11 Dozers
- Komatsu tracked loaders and dozers
- Small civil excavators, diggers and loaders

### SPECIFICATIONS

Safe Working Load	400kg / 880lbs
Attachment Type	Front
Tare Weight	15kg / 34lbs
Dimensions (LxWxH)	670 x 410 x 135mm 26.4 x 16.1 x 5.3inch

## Front Belly Plate Cradle

Part No: TED-ATT-023-00

The Front Belly Plate Cradle is designed to support the Front Belly Plate of D-11 dozers at the right angle for safe removal and transportation.

The raised platform provides additional stability for the belly plate by holding it horizontal and allows it to be rotated on the turntable which allows it to be maneuvered between the ripper tine and the tracks.



### APPLICATIONS

Safely remove and replace front belly plates on D-11 Dozers.

### SPECIFICATIONS

Safe Working Load	800kg / 1,760lbs
Attachment Type	Turntable
Tare Weight	13kg / 29lbs
Dimensions (LxWxH)	745 x 335 x 90mm 29.3 x 13.2 x 3.5inch



# Cutting Edge Maintenance

TED

## Cutting Edge Tool

Part No: TED-ATT-006-01



The Cutting Edge Tool is used to lower manual handling on CET maintenance. Rest the CET due for removal in the Cutting Edge Tool and lift or lower into place via TED's remote control operation.

The Cutting Edge Tool can be mounted onto any of the adaptor modules for greater alignment of components.

### SPECIFICATIONS

Safe Working Load	800kg / 1,760lbs
Attachment Type	Turntable
Tare Weight	10kg / 23lbs
Dimensions (LxWxH)	570 x 340 x 200mm 22.4 x 13.4 x 7.9inch

### APPLICATIONS

- CAT Dozers up to D-11
- Komatsu Dozers
- Rubber tyred Dozers

## Double Sided Cutting Edge Tool

Part No: TED-ATT-020-00



The Double Sided Cutting Edge Tool is designed to aid in routine CET maintenance, the Double Sided Cutting Edge Tool allows operators to remove, clean, turned and re-install the CET.

The Double Sided Cutting Edge Tool can be mounted onto any of the movement modules for greater alignment of components.

### SPECIFICATIONS

Safe Working Load	800kg / 1,760lbs
Attachment Type	Turntable
Tare Weight	40kg / 89lbs
Dimensions (LxWxH)	570 x 450 x 160mm 22.4 x 17.7 x 6.3inch

### APPLICATIONS

Maintain and rotate cutting edges up to 800kg (1,760lbs).

## Grader Cutting Edge

Part No: TED-ATT-021-00

The Grader Cutting Edge Tool can be utilised to take the weight of the CET from a variety of graders. The attachment is fitted with two (2) adjustment bolts which can be tightened to assist in stabilising the CET during transit and installation.

When used by itself the Grader Cutting Edge has a SWL of 200kg (440lbs), however if used with the TED Counter Balance (Page 23) the SWL can be increased to 400kg (880lbs).



### APPLICATIONS

- CAT Graders all sizes up to 24M
- Komatsu Graders
- John Deere Graders

### SPECIFICATIONS

Safe Working Load	400kg / 880lbs
Attachment Type	Front
Tare Weight	21kg / 47lbs
Dimensions (LxWxH)	650 x 150 x 240mm 25.6 x 5.9 x 9.4inch

## Corner Cutting Edge Tool (CCET)

Part No: TED-ATT-024-00

The CCET is fully adjustable making it perfect for corner CET. Operators can adjust the support pins in any combination of holes to achieve an angle of up to +/- 10 degrees. The CCET also has two retaining bolts which can be used to support different CET thicknesses.

The CCET works best when combined with the Low Profile Pivot Table allowing it to be aligned with the angle of the CET being removed/installed.



### APPLICATIONS

- CAT Dozers up to D-11
- Komatsu Dozers
- Rubber tyred Dozers

### SPECIFICATIONS

Safe Working Load	800kg / 1,760lbs
Attachment Type	Turntable
Tare Weight	40kg / 89lbs
Dimensions (LxWxH)	560 x 335 x 210mm 22 x 13.2 x 8.3inch



# Adaptor Modules

## Low Profile Pivot Table (LPPT)

Part No: TED-ATT-030-00



The LPPT is the perfect for supporting components on an angle and works in conjunction with other turntable mounting attachments such as the Sump Tray and Cutting Edge Attachments.

The LPPT is capable of fine adjustment +/- 15 degrees and provides fitters with superior flexibility and control.

### SPECIFICATIONS

Safe Working Load	800kg / 1,760lbs
Attachment Type	Turntable
Tare Weight	25kg / 56lbs
Dimensions (LxWxH)	565 x 335 x 115/160mm 22.3 x 13.2 x 4.6/6.3inch

### APPLICATIONS

Best used in conjunction with:

- Corner Cutting Edge Tool
- Sump Tray
- Sound Suppression Tray

## Slope Jig

Part No: TED-ATT-041-00



The Slope Jig was designed to primarily be used with the Universal Mounting Plate to allow operators to undertake tasks where the intended job is at an angle. Component specific attachments can also be bolted directly onto the Slope Jig.

The Slope Jig can support loads of up to 800kg (1,760lbs) and can be manually adjusted to achieve angles from 0 to 45 degrees.

### SPECIFICATIONS

Safe Working Load	800kg / 1,760lbs
Attachment Type	Turntable
Tare Weight	28kg / 62lbs
Dimensions (LxWxH)	600 x 335 x 95/450mm 23.6 x 13.2 x 3.8/17.7inch

### APPLICATIONS

Used in conjunction with the Universal Mounting System for safer, easier removal and replacement of:

- Y-Links on CAT Trucks
- Steering Arms on CAT Trucks
- LeTourneau Ball Caps

## Forward Shift

Part No: TED-ATT-032-00

The Forward Shift module attaches to the turntable and allows operators to mount various other component specific attachments onto it.

The module can be manually adjusted +/- 40mm (1.6inch) forwards or rearwards allowing operators greater control when lining up components during installation.



### APPLICATIONS

Best used in conjunction with the Side Shift, Pivot Table and Universal Mounting System to assist with:

- Fitment of hydraulic pumps

### SPECIFICATIONS

Safe Working Load	800kg / 1,760lbs
Attachment Type	Turntable
Tare Weight	24kg / 53lbs
Dimensions (LxWxH)	565/650 x 335 x 70mm 22.3/25.6 x 13.2 x 2.8inch

## Side Shift

Part No: TED-ATT-035-00

The Side Shift module attaches to the turntable and allows operators to mount various other component specific attachments onto it.

The module can be manually adjusted +/- 50mm (2inch) sideways allowing operators greater control when lining up components during installation.



### APPLICATIONS

Best used in conjunction with the Forward Shift, Pivot Table and Universal Mounting System to assist with:

- Fitment of hydraulic pumps

### SPECIFICATIONS

Safe Working Load	800kg / 1,760lbs
Attachment Type	Turntable
Tare Weight	25kg / 56lbs
Dimensions (LxWxH)	565 x 335/380 x 70mm 22.3 x 13.2/15 x 2.8inch



## Extension Block

Part No: TED-ATT-012-00



The Extension Block mounts directly onto the TED Turntable allowing operators to achieve an additional 300mm (11.8inch) of reach per block and up to a maximum of two blocks or 600mm (23.6inch).

Other turntable attachments can then be mounted on top.

### SPECIFICATIONS

Safe Working Load	800kg / 1,760lbs
Attachment Type	Turntable
Tare Weight	18kg / 40lbs
Dimensions (LxWxH)	565 x 335 x 300mm 22.3 x 13.2 x 11.8inch

### APPLICATIONS

Commonly used in conjunction with:

- Steer Cylinder Cradle
- Slope Jig
- Pivot Table
- Sump Tray

## Elevated Table

Part No: TED-ATT-033-00



The Elevated Table provides operators with an additional 600mm (23.6inch) of reach whilst not compromising stability.

The Elevated Table has its own built in turntable which other attachments can be bolted onto.

### SPECIFICATIONS

Safe Working Load	650kg / 1,430lbs
Attachment Type	Turntable
Tare Weight	150kg / 330lbs
Dimensions (LxWxH)	1080 x 650 x 630mm 42.6 x 25.6 x 24.9inch

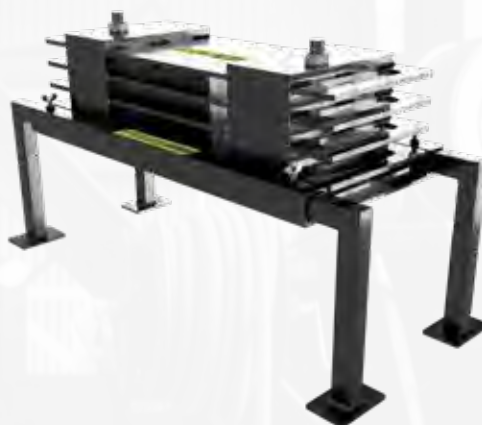
### APPLICATIONS

To be used with Hoist Pump and Steering Pump. Other attachments can be mounted on the top.

## Counter Balance

Part No: TED-ATT-018-00

The Counter Balance is designed to be mounted onto the back of the table therefore increasing the lifting capacity of the front attachments. The Counter Balance comes with removable legs allowing for quick mounting and removal.



### APPLICATIONS

Commonly used in conjunction with:

- Adjustable Fork Tynes
- Grader Cutting Edge
- Track Roller Carrier
- Tyre Handler

### SPECIFICATIONS

Safe Working Load	N/A
Attachment Type	Table
Tare Weight	235kg / 518lbs
Dimensions (LxWxH)	845 x 400 x 245mm 33.3 x 15.8 x 9.7inch





# General Purpose Tools

TED

## Dozer Blade

Part No: TED-ATT-002-01



The Dozer Blade comes standard with every TED and is primarily used to clear a level working area allowing for a stabler and therefore safer operation.

When the blade is fitted in the bottom mounting port it will just touch the ground when TED is fully compressed, perfect for pushing debris off concrete floors.

### SPECIFICATIONS

Safe Working Load	N/A
Attachment Type	Front
Tare Weight	15kg / 34lbs
Dimensions (LxWxH)	787 x 85 x 225mm 31 x 3.4 x 8.9inch

### APPLICATIONS

- Clear a level working area
- Clearing debris
- Generally pushing stuff around

## Tyre Handler

TED-ATT-016-00



The Tyre Handler is designed to support tyres during removal and installation on a range of vehicles. The top arm lengths can be adjusted to hold the tyre securely in place. Each arm is fitted with a roller, enabling the tyre to be rotated for ease of lining up bolt holes.

When used by itself the Tyre Handler has a SWL of 200kg (440lbs), however if used with the TED Counter Balance (Page 23) the SWL can be increased to 400kg (880lbs).

### SPECIFICATIONS

Safe Working Load	400kg / 880lbs
Attachment Type	Front
Tare Weight	40kg / 89lbs
Dimensions (LxWxH)	1450 x 505 x 555mm 57.1 x 19.9 x 21.9inch

### APPLICATIONS

Use to assist with installation and removal of tyres on:

- Water Carts & Service Trucks (size dependent)
- Road Trucks
- Utes and Passenger vehicles

## Stand Locating Tool

Part No: TED-ATT-003-01

The Stand Locating Tool has been designed to move stands around under machinery removing the manual handling element, and removing the need for fitters to be under suspended loads whilst placing stands.

When used by itself the Stand Locating Tool has a SWL of 200kg (440lbs), however if used with the TED Counter Balance (Page 23) the SWL can be increased to 400kg (880lbs).



### APPLICATIONS

Safely position various types of stands under suspended loads.

### SPECIFICATIONS

Safe Working Load	400kg / 880lbs
Attachment Type	Front
Tare Weight	8kg / 18lbs
Dimensions (LxWxH)	350 x 390 x 155mm 13.8 x 15.4 x 6.2inch



## Front Jib

Part No: TED-ATT-031-00



Move heavy awkward loads from above with the handy multi-purpose Jib. The Jib has three (3) extension settings which can be adjusted by simply removing the adjustment bolt, sliding the extension arm to the desired position and refasten the bolt through the appropriate hole.

When used by itself the Front Jib has a SWL of 200kg (440lbs), however if used with the TED Counter Balance (Page 23) the SWL can be increased to 400kg (880lbs).

### SPECIFICATIONS

Safe Working Load	400kg / 880lbs
Attachment Type	Front
Tare Weight	21kg / 47lbs
Dimensions (LxWxH)	580-780 x 500 x 250mm 22.9-30.1 x 19.7 x 9.9inch

### APPLICATIONS

Lift a wide variety of awkward loads:

- Irregular shaped items
- Mechanical Components

## Boomerang Stand

Part No: TED-ATT-034-00



Designed to assist in positioning Boomerang Stands into position. The attachment has been designed to carry the Boomerang Stand in three different positions to allow operators to place the stands up against a wall or obstacle.

When used by itself the Boomerang Stand has a SWL of 200kg (440lbs), however if used with the TED Counter Balance (Page 23) the SWL can be increased to 400kg (880lbs).

### SPECIFICATIONS

Safe Working Load	400kg / 880lbs
Attachment Type	Front
Tare Weight	45kg / 100lbs
Dimensions (LxWxH)	760 x 500 x 250mm 30 x 19.7 x 9.9inch

### APPLICATIONS

Removal and replacement of Boomerang Stands without manual handling.



## Adjustable Fork

Part No: TED-ATT-022-00

The Adjustable Fork Tynes have been designed to assist in the movement of a variety of stands, tooling and mechanical components in tight low spaces without the need for manual handling. The tynes width can be manually adjusted quickly up to a separation of 445mm (17.6inch).

When used by itself the Adjustable Fork has a SWL of 200kg (440lbs), however if used with the TED Counter Balance (Page 23) the SWL can be increased to 400kg (880lbs).



### APPLICATIONS

Move around without manual handling:

- Stands
- Irregular shaped tooling
- Pallets
- Mechanical Components

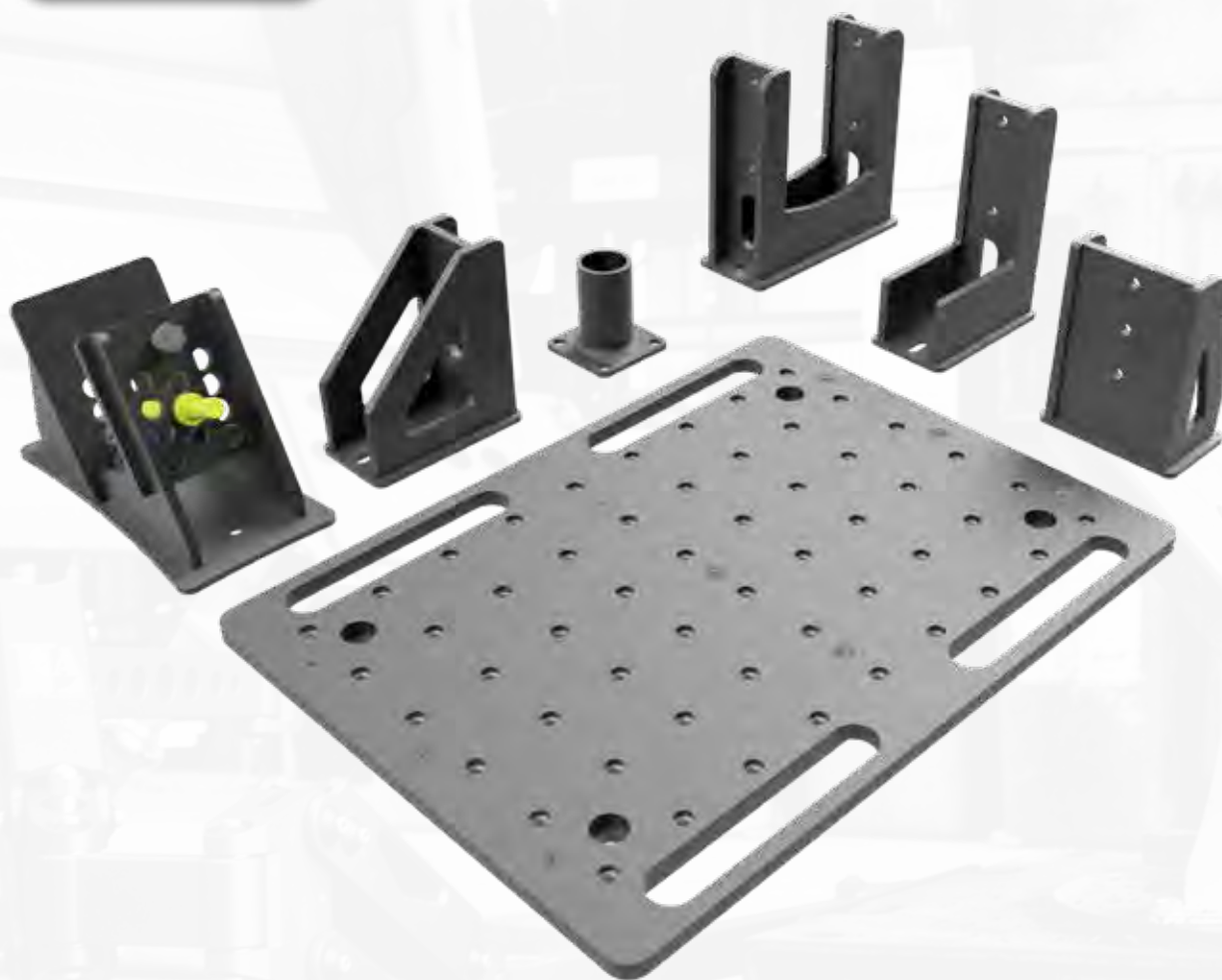
### SPECIFICATIONS

Safe Working Load	400kg / 880lbs
Attachment Type	Front
Tare Weight	47kg / 104lbs
Dimensions (LxWxH)	845 x 800 x 360mm 33.3 x 31.5 x 14.2inch



## Universal Mounting System

Part No: TED-ATT-038-00



The Universal Mounting System was designed to allow operators to arrange different types of support frames in a multitude of configurations depending on the task they wish to perform.

The Universal Mounting Plate has a series of M12 screw points laid out in a 6x9 grid at 75mm (3inch) spacing, allowing operators to fix the brackets on either orientation.

The support frames can be combined with tie down points (e.g. M12 eyebolt) to effectively support and secure all sorts of different shaped loads.

To further enhance its' versatility, the Universal Mounting Platform can be mounted onto any of the functional modules, Forward or Side Shift, Low Profile Pivot Table, Extension Block or Slope Jig.






### SPECIFICATIONS

Name	Universal Mounting Plate
Part No	TED-ATT-038-00
Safe Working Load	800kg / 1,760lbs
Attachment Type	Turntable
Tare Weight	37kg / 82lbs
Dimensions (LxWxH)	700 x 6 x 520mm 27.6 x 0.3 x 20.5inch

### APPLICATIONS

Can be setup to support a wide variety of oddly shaped components. See descriptions in the support frames table for ideas on how to utilise the Universal Mounting System.

## SUPPORT FRAMES

Picture	Specifications		Description
	Name	U-Frame	<p>The U-Frame can be utilized to capture a component within the 160mm / 6.3inch wide cradle.</p> <p>Suitable for applications where the component is long and relatively skinny with a flat bottom.</p>
	Part No	TED-ATT-039-01	
	Tare Weight	9kg / 20lbs	
	Dimensions (LxWxH)	265 x 105 x 256mm 10.5 x 4.2 x 10.1inch	
	Name	L-Frame	<p>Two L-Frames can be used where the component is more than 160mm in width, or a single L-Frame if the component is an irregular shape.</p>
	Part No	TED-ATT-039-02	
	Tare Weight	6kg / 14lbs	
	Dimensions (LxWxH)	185 x 105 x 256mm 7.3 x 4.2 x 10.1inch	
	Name	Stopper Frame	<p>The Stopper Frames can be arranged as required and will act as a barrier to limit any movement from the component.</p>
	Part No	TED-ATT-039-03	
	Tare Weight	5kg / 12lbs	
	Dimensions (LxWxH)	115 x 160 x 206mm 4.6 x 6.3 x 4.2inch	
	Name	Circle Frame	<p>The Circle Frame has a diameter of 60mm and can be used to hold components with holes or circular edges in place.</p>
	Part No	TED-ATT-039-04	
	Tare Weight	2kg / 5lbs	
	Dimensions (LxWxH)	100 x 100 x 106mm 4 x 4 x 4.2inch	
	Name	V-Frame	<p>Two V-Frames can be used together to support cylindrical items. They can be spaced close together or further apart depending on the diameter of the component.</p>
	Part No	TED-ATT-039-05	
	Tare Weight	6kg / 14lbs	
	Dimensions (LxWxH)	185 x 100 x 206mm 7.3 x 4 x 8.2inch	
	Name	CET Frame	<p>The CET frame can be used to support various styles of cutting edges in place of the standard cutting edge attachments detailed on Page 18.</p>
	Part No	TED-ATT-042-00	
	Tare Weight	10kg / 23lbs	
	Dimensions (LxWxH)	325 x 165 x 210mm 12.8 x 6.5 x 8.3inch	



# Storage and Transport

TED

## TED's Home

Part No: TED-ACC-003-00



Keep TED and attachments neatly stored away in TED's Home. TED's Home has tie down points and forklift guides to allow users to transport the whole system if required.

The attachment storage system allows easy access and secure fixing points for multiple TED attachments. There is an upper shelf where users can store attachments and a hanging frame for turntable mounted attachments.

### SPECIFICATIONS

Safe Working Load	1,100kg / 2,420lbs
Attachment Type	Accessory
Tare Weight	150kg / 330lbs
Dimensions (LxWxH)	1,570 x 950 x 1,215mm 61.9 x 37.5 x 47.9inch

### APPLICATIONS

- Storage of TED
- Storage of TED Attachments
- Forkliftable

## Attachment Stand

Part No: TED-ACC-005-00



With the ever increasing range of TED attachments, additional storage space is required. The TED Attachment Stand is a sturdy, adjustable shelf designed to store multiple attachments.

The stand is flat pack in design and the three (3) upper shelves can be installed at 150mm (5.9inch) increments. The stand also comes with side mounting brackets, which can be used to store the Universal Table, Track Roller Carrier and the Stand Locating Tool.

### SPECIFICATIONS

Safe Working Load	200kg / 440lbs (per shelf)
Attachment Type	Accessory
Tare Weight	260kg / 574lbs
Dimensions (LxWxH)	1,300 x 700 x 1,510mm 51.2 x 27.6 x 59.5inch

### APPLICATIONS

- Bulk storage of TED Attachments

## TED Sleeping Bag

Part No: TED-ACC-002-00  
Small

The TED Sleeping Bag is a durable throw over cover to keep the workshop dust and grime off your TED. The large TED Sleeping Bag is big enough to cover the entire TED home to keep not only TED clean, but all the attachments stored on the home as well.

Made from a durable canvas, the Sleeping Bags not only keep the dust and grime off TED, but they are also water resistant and will protect TED from potential water damage.



### APPLICATIONS

- Protect TED from dust and debris when not in use

### SPECIFICATIONS

Attachment Type	Accessory
Dimensions (LxWxH) Small	1,900 x 1180 x 400mm 74.8 x 46.5 x 15.8inch
Dimensions (LxWxH) Large	1,900 x 1180 x 1,215mm 74.8 x 46.5 x 47.9inch





## Pit Rescue Trailer

TED-ACC-004-00

Nivek's Pit Rescue Trailer is built in-house and is made handle the toughest of haul roads and meet or exceed mine site requirements. Ideal for contractors working on multiple sites. It is the perfect way to transport TED from workshop to pit, or site to site.

With a 2T rated axle, Landcruiser 5 stud tyres (spare included) and a frame constructed from 50x50x3mm Square Hollow Section and 3mm mild steel plate for the floor and walls, the Nivek Pit Rescue Trailer is extremely durable. The frame has been powder coated throughout to ensure it is protected from the elements and will remain in good condition for many years.

A spring assisted tail gate can be pulled down to become an access ramp for TED, allowing it to be unloaded and loaded independently. The ramp has built in guide rails and anti-slip coating to assist operators when driving up the ramp.

Attachment storage pockets have been built into the frame allowing operators to store and transport the required attachments to the job site. A heavy-duty cargo net is also provided to ensure the attachments stay in the trailer during transport.







### PAYLOAD CAPACITY

With a GVM of 2,000kg, the trailer has a maximum payload capacity of 1,300kg, allowing it to carry TED and several of its attachments.



### RAMP

A spring assisted tailgate becomes a ramp, allowing operators to unload and load TED quickly, safely, and independently.



### TOUGH

With a 2T axel, Landcruiser 5 stud tyres, 3mm thick steel throughout, the Pit Rescue Trailer has been built to handle the harshest of conditions.



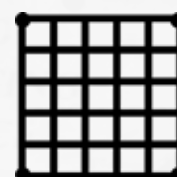
### SUPPORT LEGS

Two support legs are installed on the rear to support the trailer when loading/unloading TED.



### STORAGE COMPARTMENTS

Eight easily accessible storage pockets are available for operators to store and transport attachments or tools.



### CARGO NET

With multiple tie down points the 1 Tonne, heavy duty cargo net is easy to fit and will secure all loads during transport.

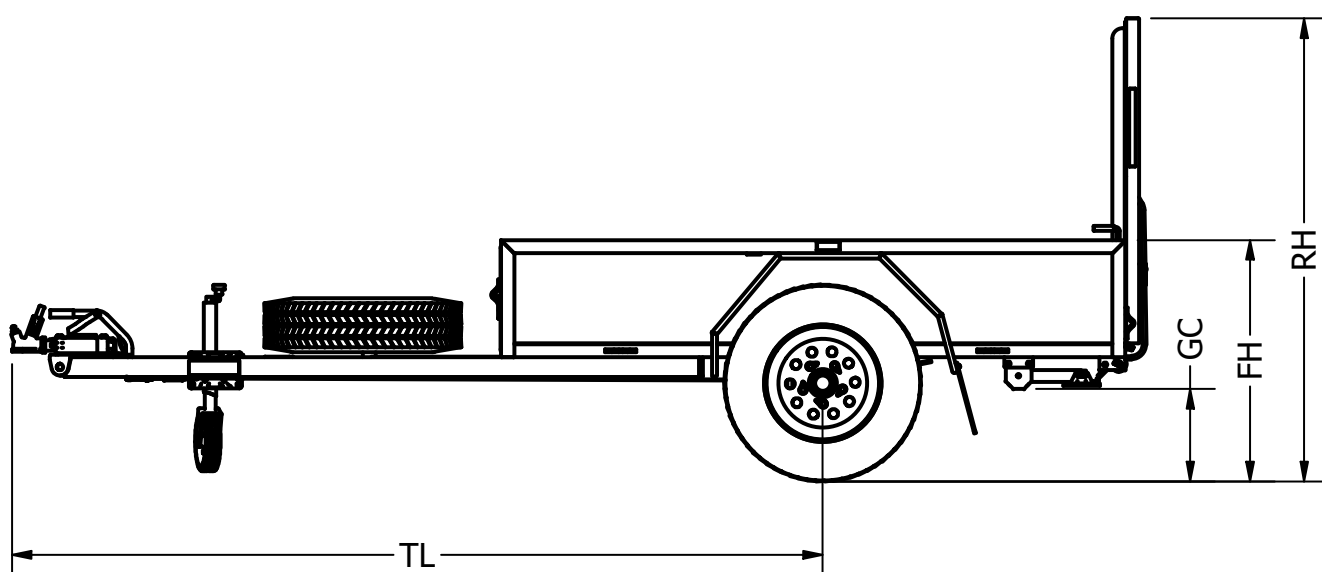
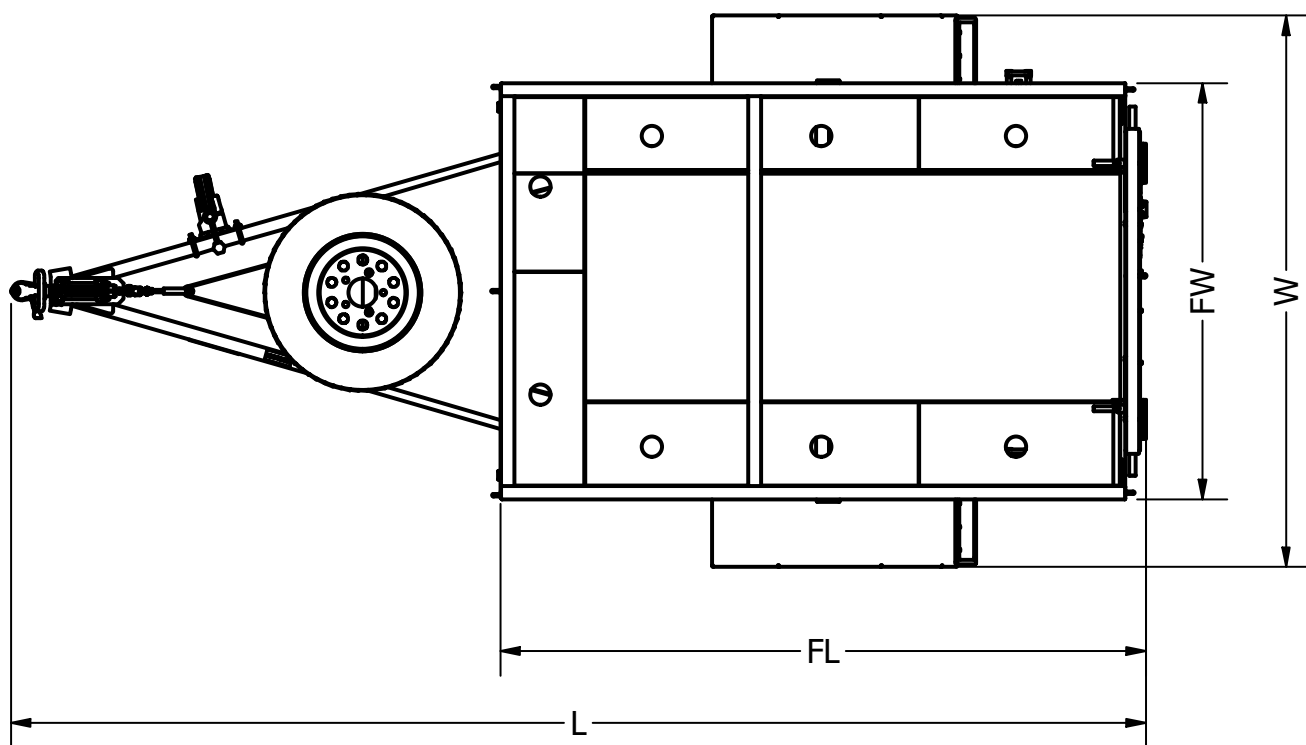
## SPECIFICATIONS

Tare weight (kg/lbs)	660kg / 1,456lbs
Payload (kg/lbs)	1,000kg / 2,205lbs
GVM (kg/lbs)	2,000kg / 4,410lbs
Brake System	Lockable mechanical brake
Wheel	Landcruiser 5 stud rim 227/75 R16 Tyres
Spring	Leaf Spring
Tow Hitch	Trailer Coupling Plated (Ball Hitch) 2,000kg rating
Ramp	Spring assisted tailgate with spring loaded latches
Cargo Net	1,000kg / 2,200lbs rated cargo net



## DIMENSIONS (MM/INCH)

Length (L)	4,360 / 171.7	Frame Length (FL)	2,480 / 97.7
Width (W)	2,120 / 83.5	Frame Width (FW)	1,600 / 63
Ramp Height (RH)	1,780 / 70.1	Ground Clearance (GC)	355 / 14
Frame Height (FH)	925 / 36.5	Length to Tyre (LT)	3,120 / 122.9





# Big TED





# CONTENTS

<b>Big TED Overview .....</b>	<b>38</b>
<b>Big TED Specifications .....</b>	<b>40</b>
<b>Big TED Dimensions .....</b>	<b>41</b>

**Big TED**





## Big TED

Part No: BTD-ASY-000-00

Big TED, as the name suggests is a larger version of the TED and shares many of the same characteristics. Big TED was primarily designed to lift weights that were above the SWL of TED yet still maintain a low profile and its manoeuvrability.

Capable of lifting loads of up to 3,000kgs (6,614lbs) to a height of 1,600mm (63inch), Big TED can be utilised to lift those heavy loads that were beyond his little brother's capacity. The increase lifting capacity is accomplished via a robust scissor lift mechanism powered via two hydraulic cylinders which provide ample power and reliability.

Operated by a joystick activated remote control, Big TED can achieve even greater precision during its movement. The joystick is fully proportional allowing operators to easily control the speed and direction of Big TED accurately.

The power system comprises of a 24V, 448Ah rechargeable battery system allowing runs times of up to 2 hours continuous operation. A 40Amp charger comes standard with every purchase and will have Big TED fully charged overnight.

The drive system is powered by two independent 3.5kW infinite control electric motors providing sufficient torque to carry the heaviest of loads around the workshop and up reasonable slopes if the needs arise. Not only are the drive motors powerful, but they are also extremely responsive allowing operators to control Big TED to within a millimetre of travel.

Several user-friendly features including a powered turntable, +/- 40mm side shift, loaded weight display, AUX power for attachments will provide operators with a fully controllable system.







### **RADIO CONTROLLED**

Big TED is wirelessly controlled by a paired radio system operating at 2.4GHz.



### **FUNCTIONALITY**

Big TED has been built with a powered turntable, table side shift, load cells, tilt sensor, to provide operators greater control and useful feedback.



### **ALL TERRAIN**

Big TED's tracks allow travel over virtually any surface allowing deployment in the field saving a fortune on machinery transport.



### **LIFTING CAPACITY**

Big TED has been designed with an impressive 3,000kg (6,614lbs) safe working load lifting capacity.



### **POWER SYSTEM**

A 24V battery system powers Big TED's independent 3.5kW infinite control electric motors.



### **ADAPTABLE**

Versatile attachments can be mounted to the Big TED turntable or table front allowing operators to perform a variety of tasks.



## SPECIFICATIONS

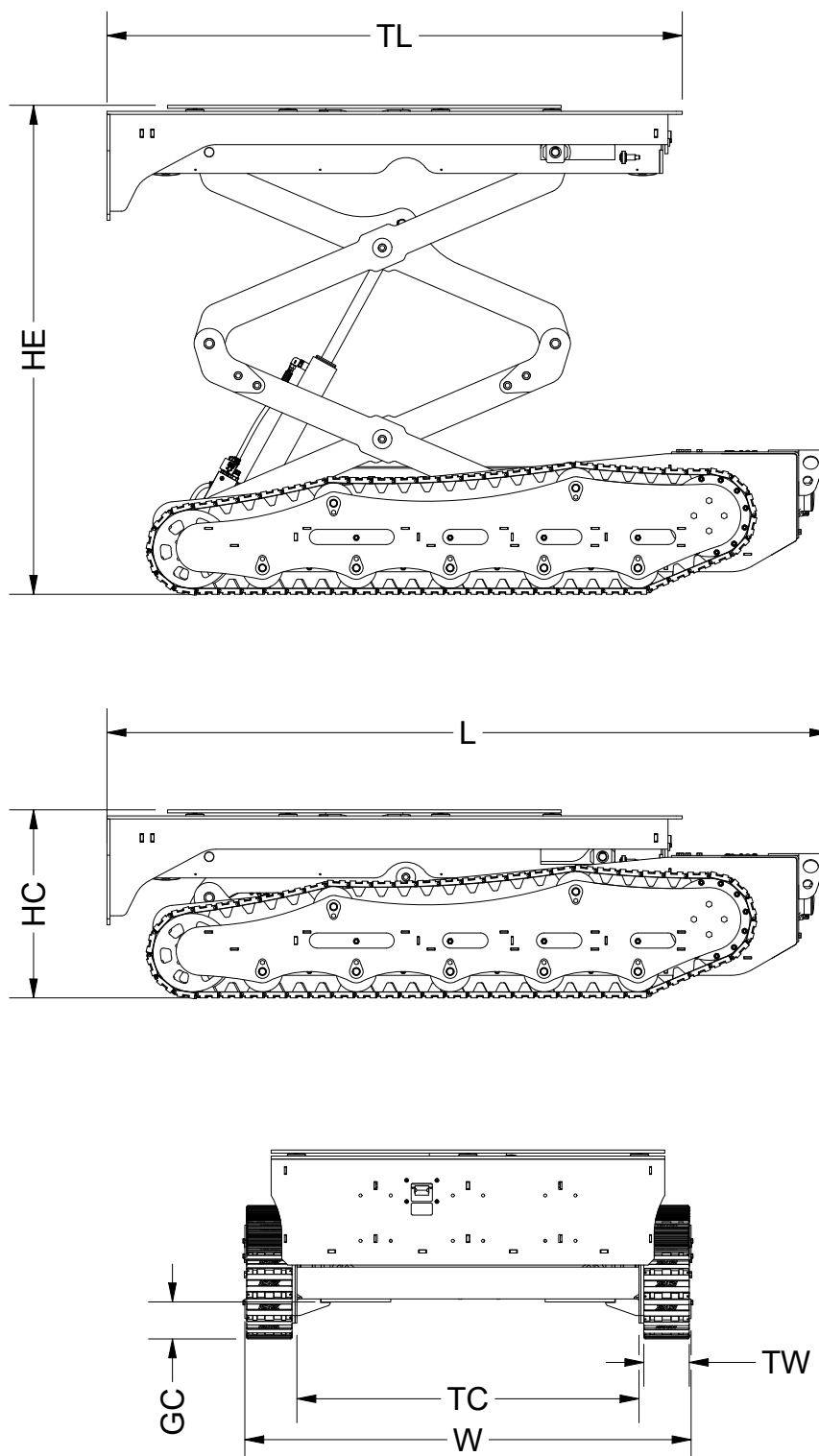
Tare weight (kg/lbs)	2,350 / 5,181
Safe Working Load (kg/lbs)	3,000 / 6,614
Ground Speed	Proportional control Maximum speed 3km/hr (1.8m/h)
Drive Motors	Two (2) 24VDC Brushless electric drive motors and motor controllers 3.5kW with 51:1 Inline gearbox Electromagnetic brake
Power Unit	24VDC, 2kW Motor Dual 1.0cc Pumps with 4L (1gal) Tank
Hydraulic Cylinders	Two (2) Hydraulic Cylinders 3" Bore 1.5" Rod 480mm Stroke
Battery System	24VDC 448Ah Battery system Eight (8) 6VDC 224AH Deep-Cycle AGM batteries in series
Radio System	Scanreco G3B Remote Control System G3 Receiver CANOpen Unit & Transmitter Mini Joystick (Paired System) 2.4Ghz operating frequency
Slew Drive	24VDC 19.8rpm 40Nm Planetary Reducer Motor 47:1 Worm Drive
Actuators	Two (2) 24VDC Electric Linear Actuators 16.9kN rated force 80mm stroke, 5mm/s speed





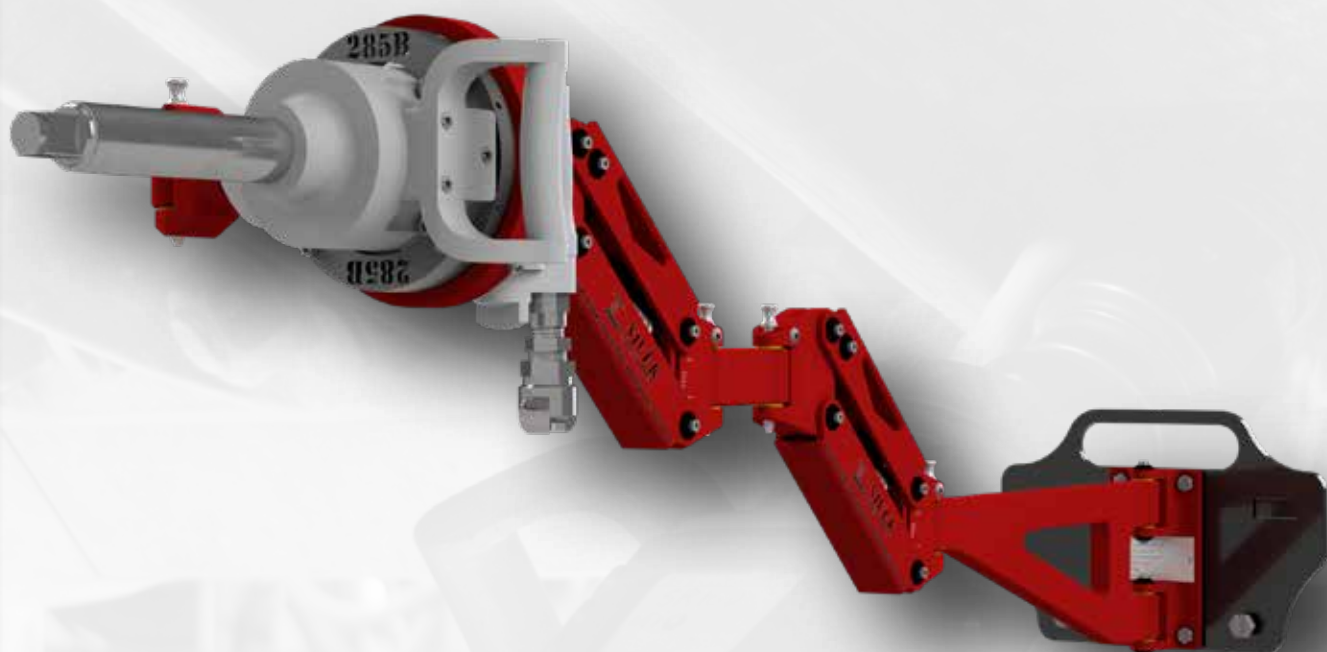
## DIMENSIONS (MM/INCH)

Length (L)	2,385 / 93.9	Table Length (TL)	1,900 / 74.8
Width (W)	1,475 / 58.1	Ground Clearance (GC)	122 / 4.8
Height Compressed (HC)	621 / 21.5	Track Clearance (TC)	1,130 / 44.5
Height Extended (HE)	1,615 / 63.6	Track Width (TW)	150 / 5.9





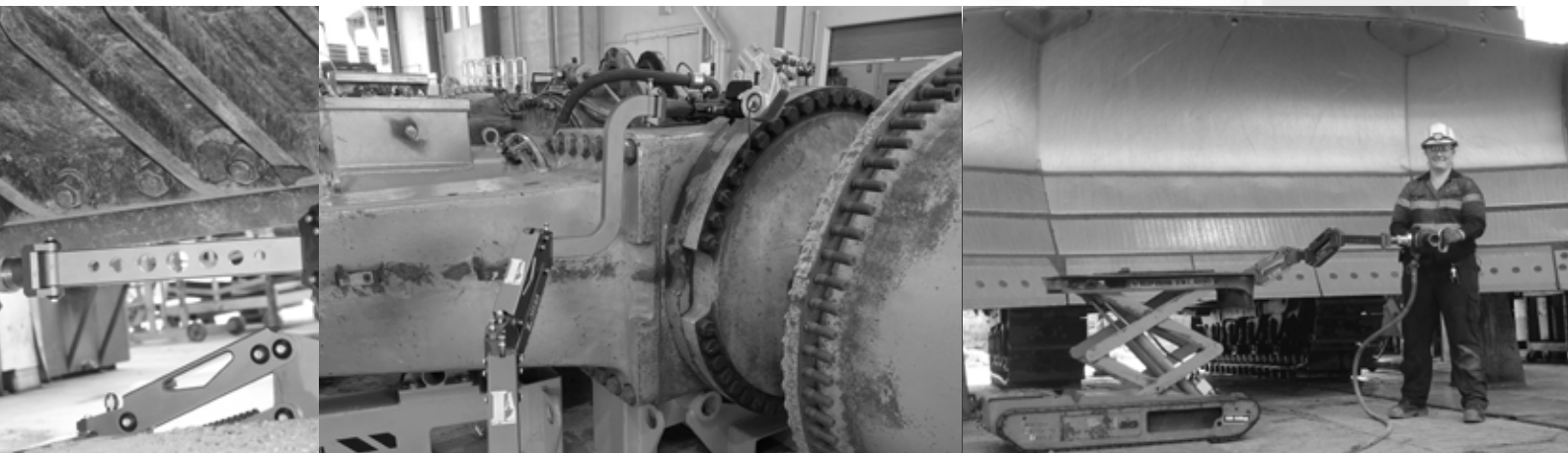
# LA40



# CONTENTS

<b>LA40 Overview .....</b>	<b>44</b>
<b>LA40 Specifications .....</b>	<b>46</b>
<b>LA40 Dimensions.....</b>	<b>47</b>
<b>Optional Extras / Upgrades.....</b>	<b>48</b>
Extras / Upgrades.....	48
Tool Brackets .....	49
<b>Hydraulic Torque Wrench Attachment.....</b>	<b>50</b>

LA40



## LA 40

Part No: AGA-ARM-100-000

The LA40 is simple and safe to operate lifting arm designed to support heavy tooling during operation. With a total lifting capacity of 40kg (89lb), the LA40 can greatly reduce worker fatigue when utilizing these tools.

The LA40 is comprised of two Spring Cases to provide the lifting ability, and a quick release swivel point to allow quick and easily tool mounting and manipulation. These are connected by various extension arms via 5 quick release pins resulting in a modular system that can be easily assembled and reconfigured depending on the task.

With six points of articulation and smart spring technology, the LA40 achieves a full range of horizontal and vertical movement. Apart from the obvious benefits to hand safety by reducing finger exposure to pinch points, the LA40 offers positive improvements to operator overall wellbeing through reduced manual handling.

A simple mounting plate design allows the LA40 to be mounted on a variety of locations, including TED.



LA40





### **FLEXIBILITY**

The multiple articulation points of the LA40 provides operators full degree of movement, allowing access to hard to reach places.



### **RELIABILITY**

No electric or air power required for operation with durable components made for the Mining Industry.



### **PRACTICAL**

The smart spring design supports the weight of tooling allowing operators to easily position and hold during operation.



### **LIFTING CAPACITY**

The LA40 is able to support tools up to a maximum weight of 40kg (89lbs).



### **TOOLING**

Multiple tools can be set up with the quick release system, allowing operators to quickly and easily change tools.



### **ADAPTABLE**

The LA40 can be set up in a wide range of configurations allowing operators to setup the arm to suit individual requirements.

## SPECIFICATIONS

Tare weight (kg/lbs)	20 / 45
Safe Working Load (kg/lbs)	40 / 89
Material	Aluminum frame with stainless steel pins
Assembly	Each section is joined together via a quick release pin allowing for quick assembly and disassembly
Degrees of movement	Six points of articulation, smart spring system, and a swivel head, provides complete freedom of movement.
Adjustment	Each spring section has a spring tension adjustment bolt allowing the operator to calibrate the LA40 spring tension to suit the tool being utilised.
Mounting	Using the mounting bolt hole pattern (see dimensions) the LA40 can be mounted to any surface. A TED mounting plate is provided as standard with every LA40.
Tool Mounting	Each LA40 is fitted with a Quick Release tool mounting system. Operators select the appropriate bracket from the library, bolt it to a spigot (if required) and insert it into the quick release mechanism.

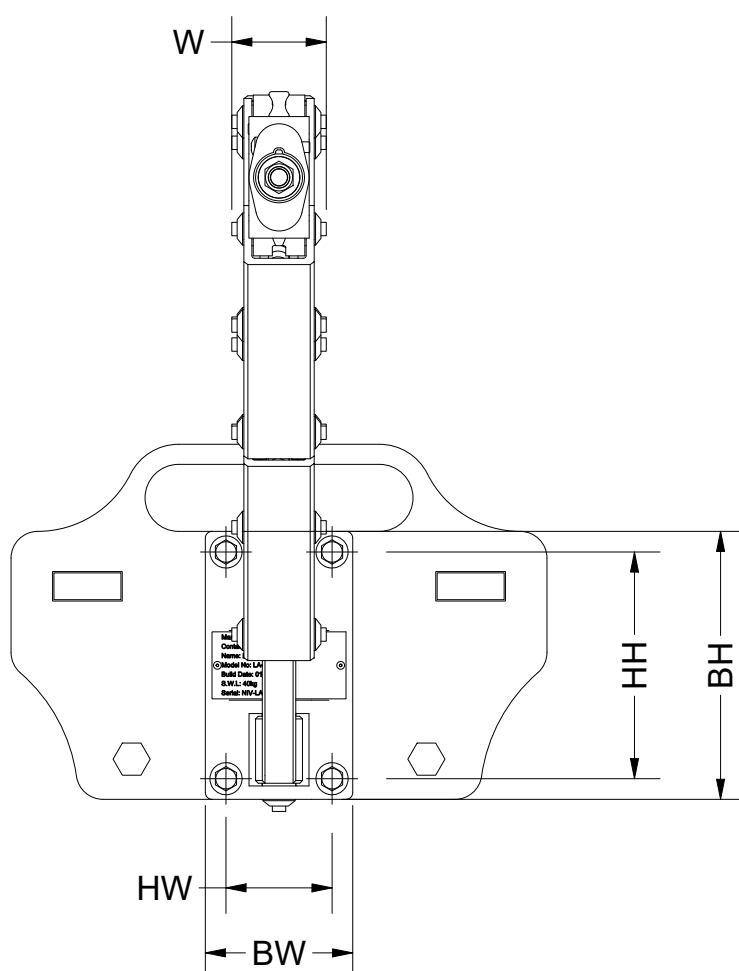
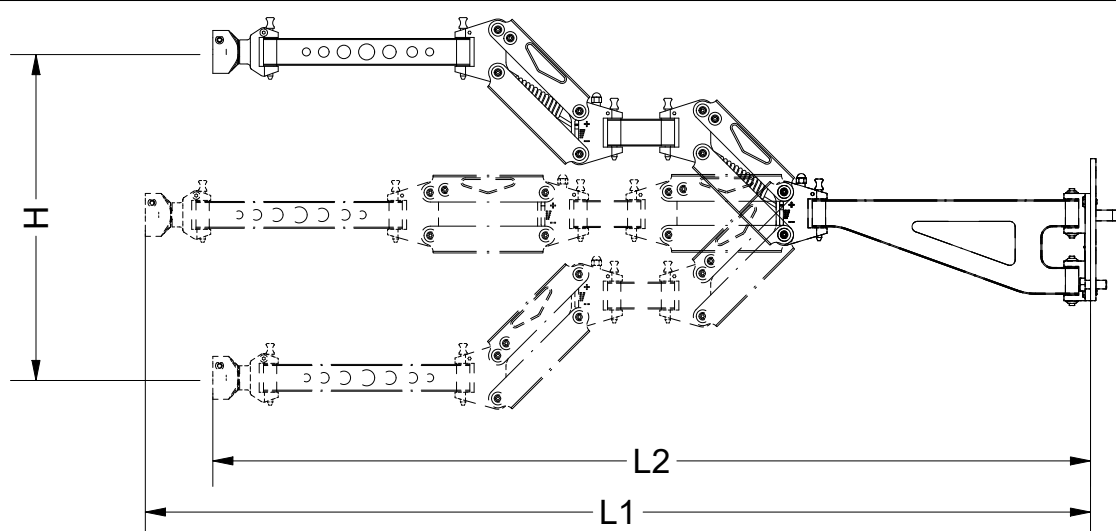


LA40



## DIMENSIONS (MM/INCH)

Length (L1)	1,760 / 69.3	Base Width (BW)	110 / 4.4
Length (L2)	1,630 / 64.2	Base Height (BH)	200 / 7.9
Width (W)	70 / 2.8	Mounting Hole (HW)	79.2 / 3.2
Height Range (H)	600 / 23.6	Mounting Hole (HH)	169.2 / 6.7



**LA40**

# Extras / Upgrades

## Accessories

Part No: AGA-ARM-100-017  
Accessory



**S-Bend**

The S-Bend extension arm allows the operator to gain an additional 350mm (13.8inch) of vertical reach.

Part No: AGA-ARM-100-014-06  
Accessory



**Norbar Attachment**

The Norbar attachment mounts straight into the quick release housing and allows operators to connect to the Norbar gimble mount.

## Quick Release

Part No: AGA-ARM-100-014-00  
Standard



**Quick Release**

The Quick Release system comes standard with any new LA40 purchase and includes one spigot. The Quick Release system allows operators to quickly change out tools.

Part No: AGA-ARM-100-014-05  
Accessory



**Male Spigot**

The Male Spigot is the mounting point for several of the tool brackets and being relatively low profile can physically remain on the tool without getting in the way.

## Gimble Attachments

Part No: AGA-GIM-100-00  
Accessory



**Large Gimble**

The Large Gimble has an inner diameter of 150mm (5.9inch) and can be utilized to provide a tool rotation which can be useful for lining up socket heads.

Part No: AGA-GIM-100-00(S)  
Accessory



**Small Gimble**

The Small Gimble has an inner diameter of 100mm (4inch) and can be utilized to provide a tool rotation which can be useful for lining up socket heads.



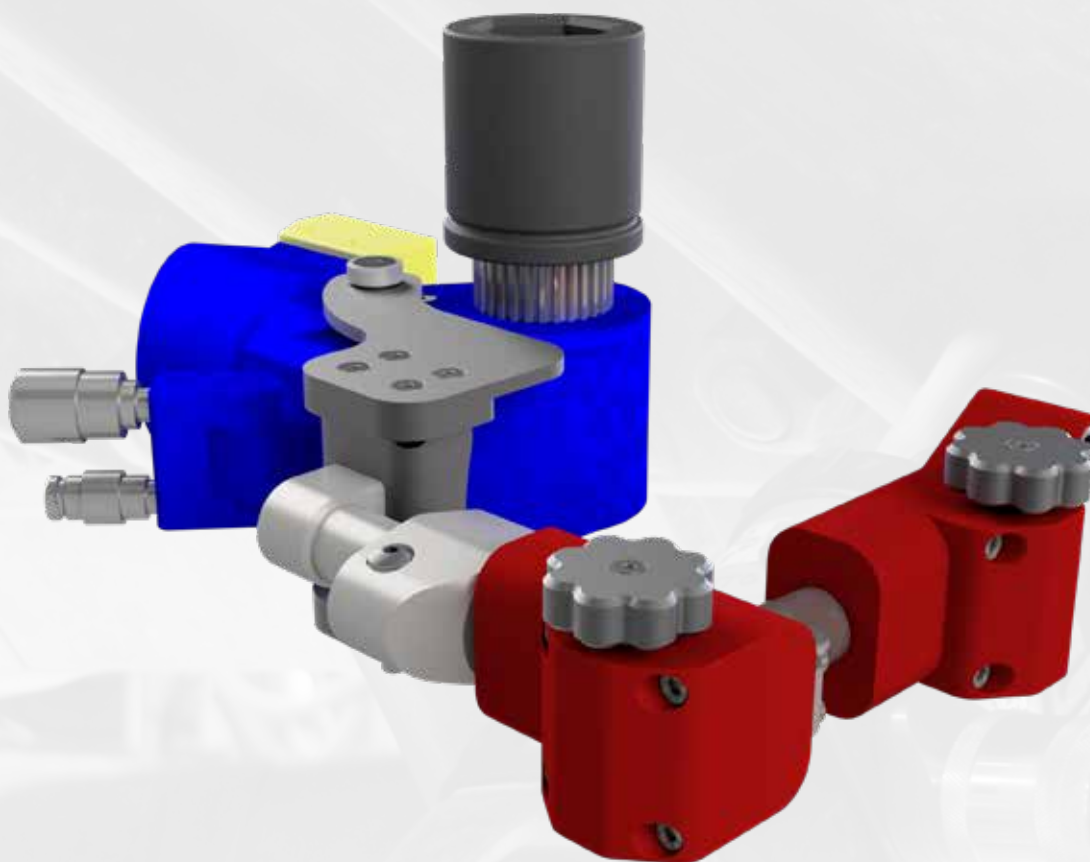
# Tool Brackets

Tool Brand	Tool Type	Model	Part Number (Mounting Type)	Bracket
Ingersoll Rand	Impact Driver	285B	LA40-MB-IR-GIM-285B (Gimble)	
		285B	LA40-MB-IR-MS-285B (Male Spigot)	
		285MAX	LA40-MB-IR-QR-285MAX (Quick Release)	
		2925BTi	LA40-MB-IR-QR-2925BTi (Quick Release)	
		3955BTi	LA40-MB-IR-GIM-3955BTi (Gimble)	
		3955BTi	LA40-MB-IR-MS-3955BTi (Male Spigot)	
RAD	Pneumatic Torque Wrench	25GX	LA40-MB-RAD-MS-25GX (Male Spigot)	
		34GX	LA40-MB-RAD-MS-34GX (Male Spigot)	
NOTE: If the required tool is not listed, please contact Nivek Industries and we will be happy to design and make a suitable bracket.				

LA40

## Hydraulic Torque Wrench Attachment

Part No: AGA-ARM-100-030-00



The Hydraulic Torque Wrench attachment was designed to hold the tool in place allowing the operator to control it from a distance to eliminate the risk of oil injection and hand crushing injuries. A single operator can position the tool as required, step back and then control the wrench from a safe distance.

With the two points of articulation the operator can orientate and then hold the tool in any position to perform any required task safely.

The Hydraulic Torque Wrench attachment can easily be fixed to the LA40 arm via the quick release pin.

### APPLICATIONS

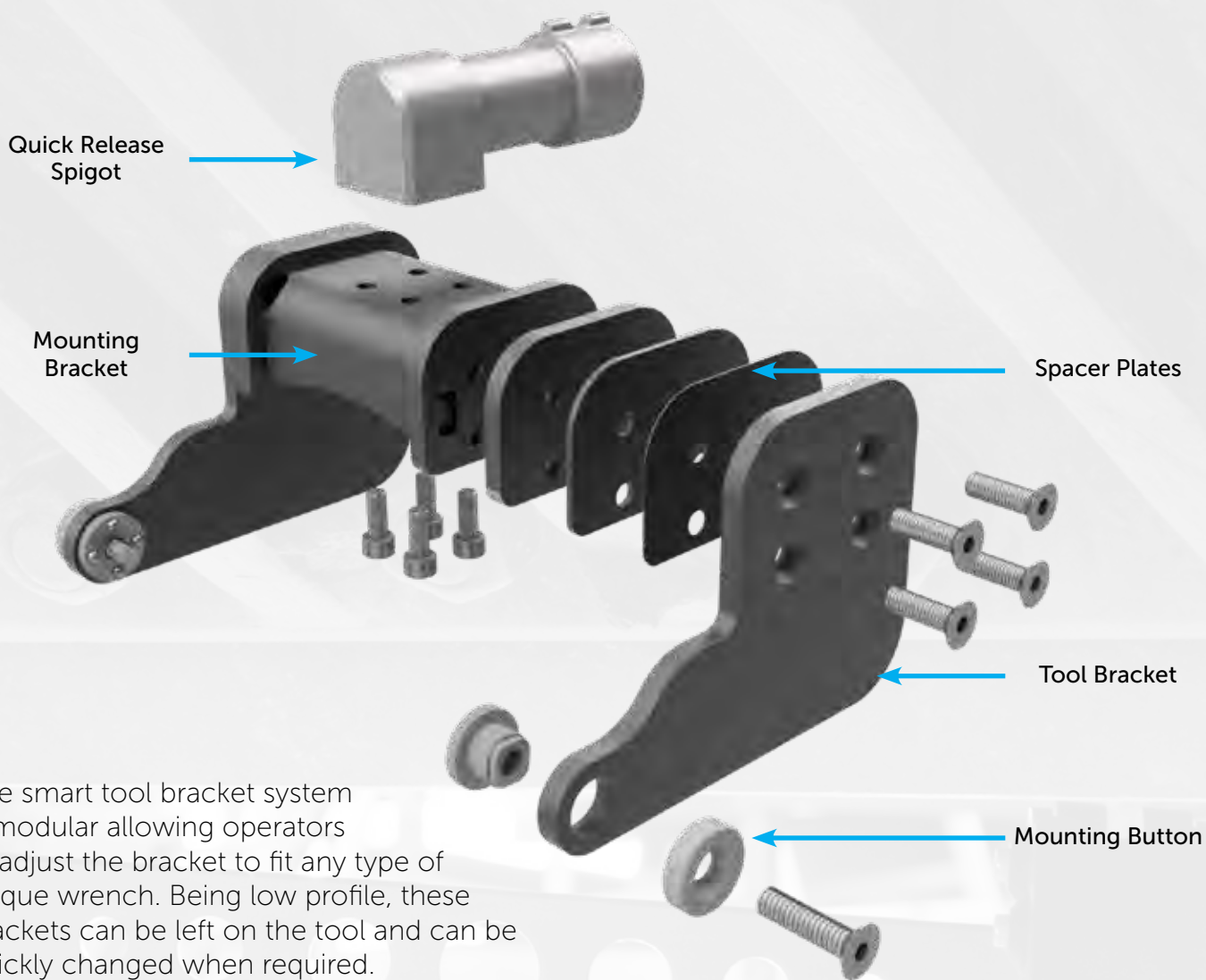
Can be setup to support a wide variety of hydraulic torque wrenches.

See tool bracket table to determine the required brackets for each type of tool.

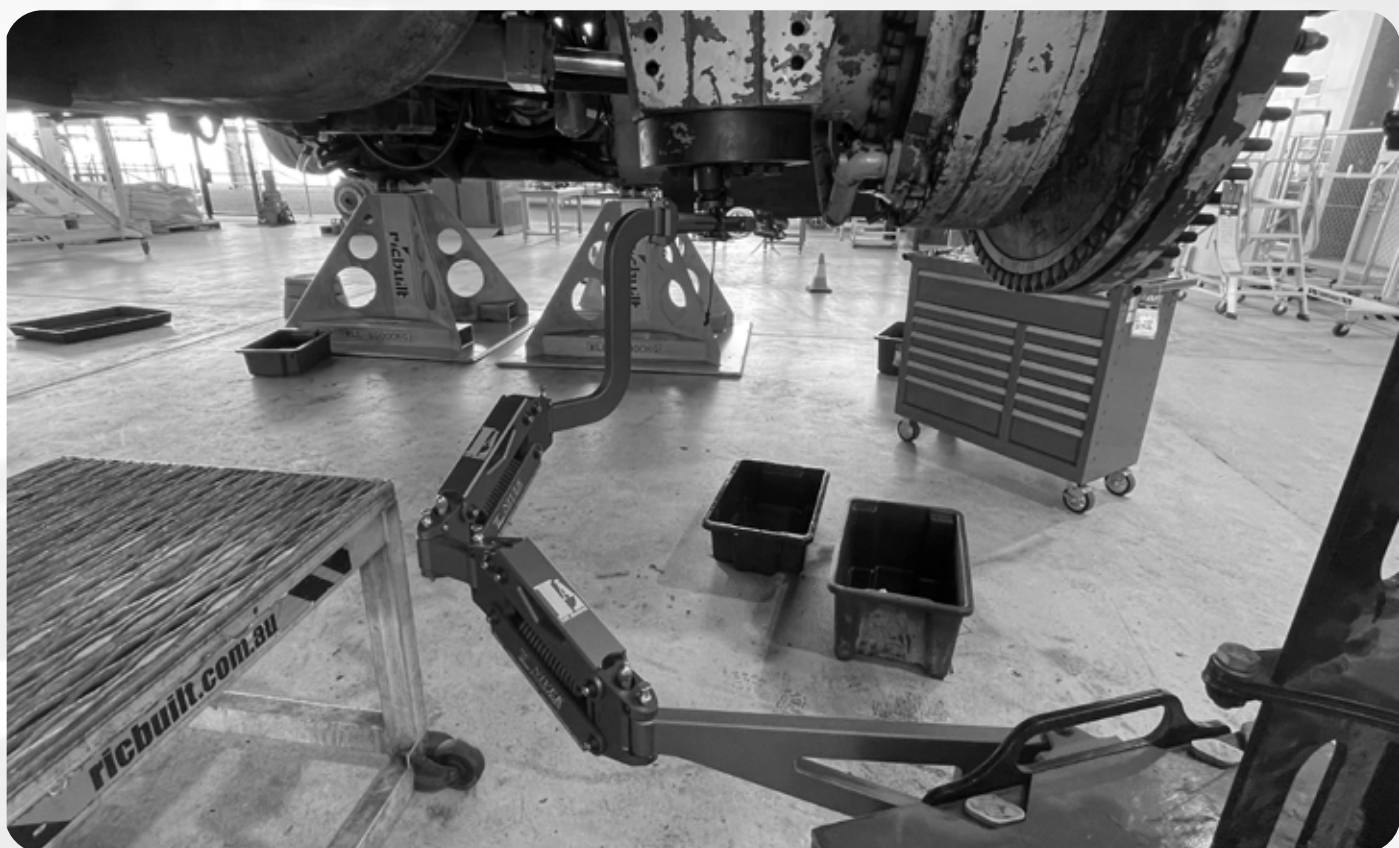
### SPECIFICATIONS

Name	Hydraulic Torque Wrench Attachment
Part No	AGA-ARM-100-030-00
Safe Working Load	32kg / 70lbs
Attachment Type	LA40
Tare Weight	8kg / 18lbs
Dimensions (LxWxH)	240 x 270 x 100mm 9.4 x 10.6 x 3.9inch
Included in package	1x Hydraulic Torque Wrench Attachment 1x Quick Release Male Spigot 1x Mounting Bracket (advise what size) 1x Set of spacer plates 1x Set of tool brackets (advise what type)







The smart tool bracket system is modular allowing operators to adjust the bracket to fit any type of torque wrench. Being low profile, these brackets can be left on the tool and can be quickly changed when required.








## QUICK RELEASE BRACKET PARTS

Picture	Specifications		Description
	Name	Quick Release Spigot	The Mounting brackets attach to the Quick Release Spigot assembly then mounts to the Hydraulic Torque Wrench Attachment.
	Part No	AGA-ARM-100-030-09	
	Name	Mounting Bracket 45mm	The specific tool brackets bolt onto the Mounting Bracket. The Mounting Brackets come in different widths including 45, 60, 80 & 100mm. These allow operators to design the mounting assembly to fit any brand or size of tool. These assemblies are then bolted onto the Quick Release Spigot.
	Part No	AGA-ARM-100-031-S45	
	Name	Mounting Bracket 60mm	
	Part No	AGA-ARM-100-031-S60	
	Name	Mounting Bracket 80mm	
	Part No	AGA-ARM-100-031-S80	
	Name	Mounting Bracket 100mm	
	Part No	AGA-ARM-100-031-S100	
	Name	Spacer 0.5mm	
	Part No	AGA-ARM-100-031-03-0.5	
	Name	Spacer 2mm	To provide additional customization and limit the number of required mounting brackets, spacer plates are available in 0.5, 2 & 6mm thicknesses. These can be utilized in any combination to create a bracket the perfect width for the specific tool being used.
	Part No	AGA-ARM-100-031-03-2	
	Name	Spacer 6mm	
	Part No	AGA-ARM-100-031-03-6	
	Name	Hytorc Mounting Button D5	The Hytorc Mounting Buttons come in three different sizes depending on the bolt that is required to mount onto the tool. The mounting buttons comprise of a male and female part that allows the tool to pivot whilst in the bracket.
	Part No	AGA-ARM-100-032-HA-D5	
	Name	Hytorc Mounting Button D7	
	Part No	AGA-ARM-100-032-HA-D7	
	Name	Hytorc Mounting Button D10	
	Part No	AGA-ARM-100-032-HA-D10	
	Name	Enerpac Mounting Button M6	The Enerpac Mounting Buttons come in two different sizes depending on the bolt that is required to mount onto the tool. The mounting buttons comprise of a male and female part that allows the tool to pivot whilst in the bracket.
	Part No	AGA-ARM-100-032-EA-M6	
	Name	Enerpac Mounting Button M10	
	Part No	AGA-ARM-100-032-EA-M10	



## TOOL BRACKETS

Brand	Model	Specifications		Picture
<b>Hytorc</b>	ICE 3	Bracket	AGA-ARM-100-031-I3-00	
		Button	Hytorc Mounting Button D5	
	ICE 5	Bracket	AGA-ARM-100-031-I5-00	
		Button	Hytorc Mounting Button D7	
	Avanti 3	Bracket	AGA-ARM-100-031-A3-00	
		Button	Hytorc Mounting Button D5	
	Avanti 5	Bracket	AGA-ARM-100-031-A5-00	
		Button	Hytorc Mounting Button D7	
	Avanti 8	Bracket	AGA-ARM-100-031-A8-00	
		Button	Hytorc Mounting Button D7	
	MXTP 3	Bracket	AGA-ARM-100-031-MP3-00	
		Button	Hytorc Mounting Button D7	
<b>Enerpac</b>	S3000	Bracket	AGA-ARM-100-031-EPS3-00	
		Button	Enerpac Mounting Button M6	
	S11000	Bracket	AGA-ARM-100-031-EPS11-00	
		Button	Enerpac Mounting Button M10	
	W2000	Bracket	AGA-ARM-100-031-EPW2-00	
		Button	Enerpac Mounting Button M6	

NOTE: If the required tool is not listed, please contact Nivek Industries and we will be happy to design and make a suitable bracket.





# CONTENTS

<b>REX Overview .....</b>	<b>56</b>
<b>REX Specifications .....</b>	<b>58</b>
<b>REX Dimensions.....</b>	<b>59</b>



REX



## REX

Part No: MNL-ASY-000-00

REX is a tough, compact, remote-controlled mini digger. REX was designed to be low profile and narrow enough to fit through a standard doorway therefore allowing operators to access areas other diggers cannot fit.

Incorporating a quick release hitch plate and hydraulic couplings, operators can quickly and easily change from one attachment to another depending on the task to be completed. Attachment functions are controlled via the remote AUX function controls.

REX's arms have been rated to handle an impressive 400kg (880lbs), providing operators with sufficient lifting capacity when using the 4-in-1 bucket or pushing force when using a trencher or auger.

Operated by a dual joystick activated remote control, operators can manoeuvre REX into position and activate its arms simultaneously. The joysticks are fully proportional allowing operators to easily control the speed of REX accurately.

With a 17.4hp Kohler Diesel engine as standard, provides operators ample power to tackle the toughest jobs. The 8L (2.1gal) tank provides operators with enough fuel for up to 1 hour on continual operation before needing to be refilled.

The drive system comprises of two independent 125cc direct drive hydraulic motors. Producing 300Nm of torque, these motors can easily drive REX up even the steepest of gradients. Combine this with the rubber tracks and low centre of gravity and you have a true all-terrain machine.







### CONTROL SYSTEM

REX is wirelessly controlled by a paired radio system operating at 433MHz.



### COMPACT

REX is designed to fit through a standard doorway, allowing it to be utilised where other machines cannot fit.



### ALL TERRAIN

REX's rubber tracks provide ample traction on most surfaces allowing operation in virtually any terrain.



### CAPACITY

REX's arms have been rated to handle an impressive 400kg (880lbs), providing operators with sufficient lifting capacity and pushing force.



### ENGINE

A Kohler 18.8hp air cooled diesel engine powers REX's hydraulic drive motors and cylinders providing sufficient power for any task.



### ADAPTABLE

REX's hitch plate allows operators to quickly change attachments letting them perform a variety of tasks safely and efficiently.



## SPECIFICATIONS

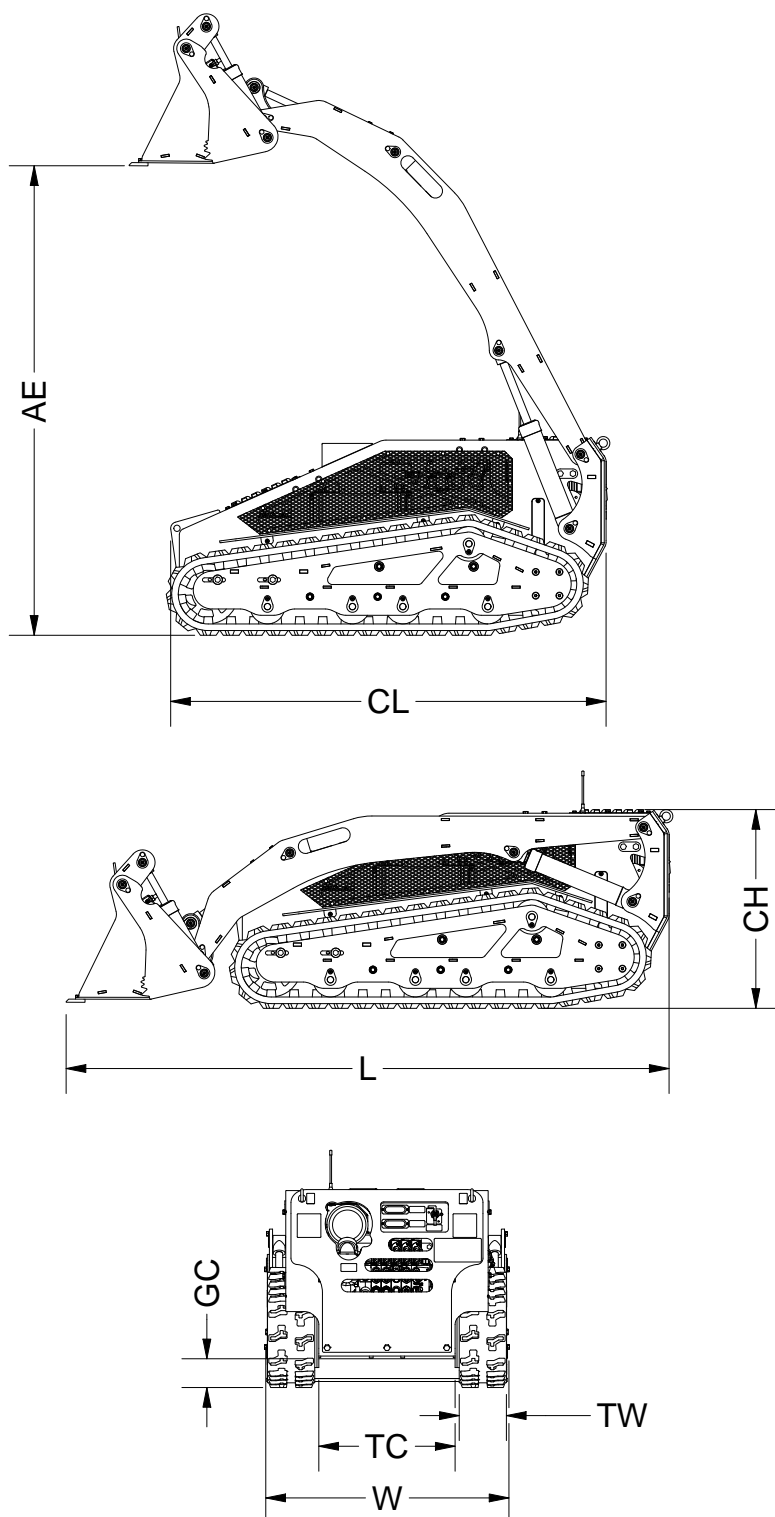
Tare weight (kg/lbs)	875 / 1930
Safe Working Load (kg/lbs)	400 / 880
Ground Speed	Proportional control Maximum speed 3km/hr (1.8m/h)
Engine	Kohler KD 425-2 Diesel Air-Cooled Engine 17.4Hp 8L (2.1gal) Tank
Drive Motors	Two RL-125 Hydraulic Motors 300Nm Torque SAE A Flange Mount, 1" Straight Spline
Radio System	Scanreco G2B Remote Control System PWM Receiver Unit & Transmitter Mini Joystick (Paired System) 433Mhz operating frequency





## DIMENSIONS (MM/INCH)

Total Length (L)	1,915 / 75.4	Arm Extension (AE)	1,491 / 58
Width (W)	772 / 30.4	Ground Clearance (GC)	91 / 3.6
Chassis Height (CH)	632 / 24.9	Track Clearance (TC)	433 / 17
Chassis Length (CL)	1,383 / 54.4	Track Width (TW)	150 / 5.9





@nivekindustries

15 Mathry Close  
McDougalls Hill  
NSW 2330 Australia  
PH +61 (0) 418 517 359



***NIVEK***  
***INDUSTRIES***

[www.nivekindustries.com.au](http://www.nivekindustries.com.au)